



*it's easy working...*

*catalogue*

10

UNIVERSAL Machine  
GEX Renovation Grinder  
GECKO Drywall Sander  
Telescope POWER Grinder

Vacuum Cleaners

Plaster Finishing Machines

*...for really perfect surfaces !*

# General view ROKAMAT Construction Machinery

## SANDER

Page

6/7 UNIVERSAL MACHINE

8/9/10 Accessories Universal



12/13 TELESCOPE POWER GRINDER

18 Accessories Telescope Power Grinder



14/15 GECKO DRYWALL SANDER

19 Accessories GECKO Drywall Sander



16/17 GEX RENOVATION GRINDER

18 Accessories GEX Renovation Grinder



## VACUUM CLEANER

20/21 RUCKSACK-VACUUM CLEANER



22 TAPIR M 25

23 TAPIR M 50

24/25 Accessories Vacuum Cleaner

ROKAMAT machines for construction and industry are constantly supplemented and enhanced. During our more than 26-year experience many sensible proposals of our customers have been integrated. Your suggestions will be highly appreciated.

# General view ROKAMAT Construction Machinery

## PLASTER FINISHING MACHINES

Page

28/29 PLASTER FINISHING MACHINE „DRY“

34/35 Accessories Plaster Finishing Machine „DRY“



30/31 PLASTER FINISHING MACHINE „WET“, (with water injection)

34/35 Accessories Plaster Finishing Machine „WET“



32/33 PLASTER FINISHING MACHINE „NAUTILO“

34/35 Accessories Plaster Finishing Machine „NAUTILO“



25 years  
expertise and experience  
in machine construction

*it's easy*

*working...*

*Precision  
Innovation  
Vision*

Machinery  
for construction and industry.

ROKAMAT products are distributed  
internationally.

ISO 9001-2000  
certified company.



For more than 25 years **ROKAMAT** has developed special machines for both painters and plasterers designed to make your life easier and increase your profitability.

Rolf Kammerer's first innovations in 1982 have rapidly grown into an internationally successful powerhouse of ideas and designs which now holds numerous patents.

**ROKAMAT** has long outgrown its initial product portfolio, with **ROKAMAT** machines being used by carpet layers, tilers, façade and building renovators as well as many other skilled tradesmen and maintenance specialists.

Rolf Kammerer's vision is one of continuous refinement and expansion of his machines and accessories, both in terms of completeness and range of application.

New products are constantly invented, tested and developed to production stage where appropriate.

**ROKAMAT** has also built up a reputation of reliability for problem solving and special applications.

We hope you will enjoy browsing through our new catalogue, regardless whether you discover **ROKAMAT** for the first time or rank already among the satisfied users of our machinery.

Furthermore we should really thank all our customers for their valuable tips and suggestions leading to improvements.

*Moving  
with the  
times*





## Accessories for ROKAMAT - Universal Machine

(Accessory discs in pairs Ø 200 mm each)

### Cleaning

Steel brushes, fine	No. 212
Steel brushes, medium	No. 213
Steel brushes, coarse	No. 214
Special steel brushes, medium	No. 230
Special steel brushes, coarse	No. 231
Nylon brushes, fine	No. 215
Nylon brushes, coarse	No. 216
Steel/nylon brushes	No. 225



A special feature of the Universal Machine is cleaning shuttering pans. Concrete residues on a pan or on steel frames can be easily removed with steel brushes. If the surface skin is finally waxed with nylon brushes, it will be ready for further use. Thanks to its easy handling and low weight pans can be cleaned in-situ.

Further uses:  
 - removing old, loose plaster, render and paint  
 - cleaning exterior façades of moss and algae  
 - cleaning and preparing plaster for new coverings

### Cleaning and Polishing

Cleaning-Pad, coarse	No. 235
Cleaning-Pad, medium	No. 234
Cleaning-Pad, fine	No. 239
Polishing-Pad, very fine	No. 233
Lambskin-Pad, superfine	No. 236



Cleaning buildings and façades.  
 Polishing, for example "marble effect"  
 Polishing parquet

(use with supporting plates No. 207)

### Scraping

Scraping attachments (Base-plate)	No. 251 No. 250 )
Nail plates „longlife“	No. 201



Nail plates with pointed pins for scraping back monocouche render. Large working surface ensures both safe and flat working of material. They can also be used to remove glass fibre wallpaper coatings

### Smoothing

Flattening attachments (Base-plate)	No. 252 No. 250 )
-------------------------------------	----------------------



Flattening plates for smoothing render and plaster after setting

### Removing wallpaper

Perforating discs	No. 222
-------------------	---------



Perforating wallpaper, so it can be thoroughly soaked and loosen easily.

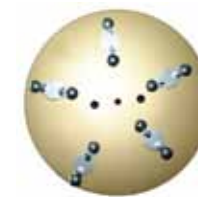
Shaving plates	No. 223
----------------	---------



For removing wallpaper, for cleaning shuttering as well.

### Removing old plaster

Widia discs	No. 217
-------------	---------



Old loose plasters can be removed, or devilled in preparation using the widia discs. It can also clean plasters and renders from carpets and tiles.

### Flattening concrete

Flattening plates	No. 227
-------------------	---------



Flattening concrete easily and quickly with the plastic flattening discs. These are to be used before the material has taken final set. (Sprayed concrete)

Flattening discs with trowel blades	No. 226
-------------------------------------	---------



For hard trowelling

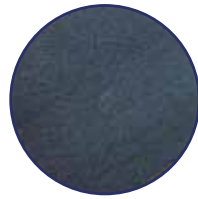


## Accessories for ROKAMAT - Universal Machine

(Accessory discs in pairs Ø 200 mm each)

### Grinding

Supporting plates with velcro No. 207



#### Sanding discs

Emery grain	16 (f. polystyrene)	No. 208
Emery grain	24	No. 209
Emery grain	40	No. 204
Emery grain	60 (f. gypsum)	No. 210
Emery grain	80	No. 205
Emery grain	100	No. 211
Emery grain	120	No. 206



(use with supporting plates No. 207)

Metal abrasive discs, fine	No. 224
Metal abrasive discs, medium	No. 232
Metal abrasive discs, coarse	No. 229

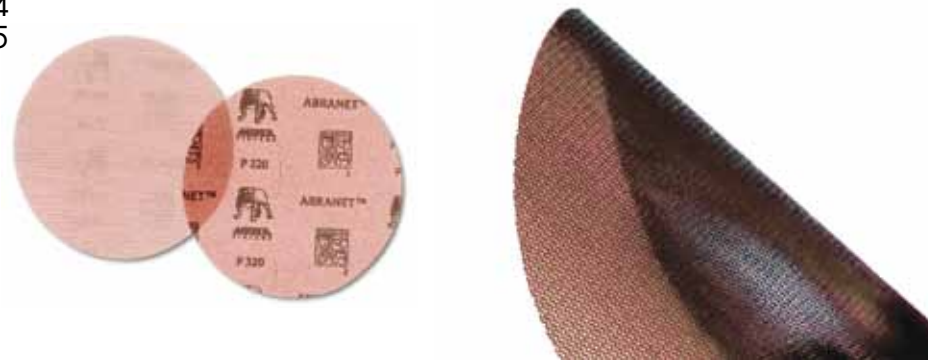


(use with supporting plates Nr. 207)

### Abranet grinding system (for plaster, filler, etc.)

Abranet grid	80	pack of 4	No. 281
Abranet grid	100	pack of 4	No. 282
Abranet grid	120	pack of 4	No. 283
Abranet grid	180	pack of 4	No. 284
Abranet grid	240	pack of 4	No. 285

(use with supporting plates No. 207)



For mounting sanding discs, metal abrasive discs, cleaning and polishing pads

Range of application:

1. Surface sanding or shaving
  - polystyrene insulating boards, rock wool or other thermal insulating systems.
  - taped board joints
  - plaster background (1st layer of the render)
2. Roughening up polystyrene surfaces for next application
3. Cleaning shuttering pans (when concrete residues are hardened)

For aggressive grinding of concrete burrs, plaster, brick, terrazzo, filler, limestone, tiles, clinker blocks, marble, paint, screed, linoleum, carpet remains, epoxy resin, fibreglass, acrylic agents, rubber, gas concrete and many other materials.



Application of Universal Machine 1, 2

with Rucksack Vacuum Cleaner 3  
with spacer block for scraped rendering 4

background: macro of Abranet structure



# ROKAMAT - Telescope POWER Grinder

No. 600

it's easy working...

MADE IN GERMANY

### Advantages

- Light weight (Tool: ca. 2,4 kg)
- High engine power (900 Watt)
- Telescopic handle (extends to 3 m high)
- Work piece / drive separation - improves weight distribution and reduces powder build up
- Antistatic motor cover
- Flexible sanding head with heavy-duty bearing (swivelling 180°)
- Special grinding plate for plasterboard, plaster and polished surfaces
- Compatible with rucksack vacuum cleaner or TAPIR M
- For a dust free safer environment

## ROKAMAT Telescope POWER Grinder

Wherever you need high engine power...



Short and long-necked grinder in one!  
Sanding tight into angles

### Range of Application

- Grinding plasterboard, wall boards and concrete burrs
- Sanding and polishing walls, floors and ceilings
- Parquet grinding
- House construction, vehicle construction, boat building



Delivery in robust case, incl. sanding set and Abranet set



Sanding tight into angles

Technical Data	
• Tool r.p.m.:	400-1.700
• Motor output Type1:	230 V / 900 W / 4,3A
Type2:	120 V / 900 W / 7,5A
• Weight	motor: 2,5 kg, tool: 2,4 kg
• Machine length	retracted: 105 cm extended: 155 cm



Sanding tight into angles with special extraction head (sliding turnable).  
Optimal suction removal.

# ROKAMAT „GECKO“ Drywall Sander

No. 800

*it's easy working...*

## Advantages

- Light weight (Tool ca. 3,7 kg)
- Super flexible grinding head, swivelling in each direction
- Angle adjustable head (by raster) allows sanding process tight into the edges, no spring-back!
- Perfect smooth run with special slide-ring (no „braking effect“ by a brush ring)
- Short and long-necked grinder in one!  
(Special extension allows grinding at a height of more than 3m)
- Powerful grinding action with minimum effort, due to vacuum exhaust and perfect balance
- Motor and grinding head separated by drive shaft improves weight distribution and longer motor life
- Consists of high-tech materials
- Compatible with Rucksack Vacuum Cleaner or TAPIR M

MADE IN GERMANY

## ROKAMAT GECKO Elite Drywall Sander with super-flexible grinding head



*Sanding tight into angles  
Short and long-necked grinder in one!*

## Range of Application

- Agile *Drywall Sander* for walls and ceilings
- Perfect for grinding above head (*Head adjustable*)
- Grinding and polishing: Plasterboards, wall boards, vehicle construction, boat building and more



Delivery in robust case, incl. sanding set and Abranet set



*Sanding tight into angels with adjustable grinding head*

Technical Data		
• Tool r.p.m.:		ca. 390 - 1.700
• Motor output	Type 1:	230 V / 900 W
	Type 2:	120 V / 900 W
• Weight		motor: 2,5 kg, tool: ca. 3,7 kg
• Machine length		retracted: 110 cm
		extended: 160 cm



# ROKAMAT „GEX“ Renovation Grinder

No. 850

*it's easy working...*

## Advantages

- Light weight (Tool ca. 3 kg)
- Super flexible grinding head, swivelling in each direction
- Angle adjustable head (by raster) allows sanding process tight into the edges, no spring-back!
- Short and long-necked grinder in one!  
(Special extension allows grinding at a height of more than 3m)
- Powerful grinding action with minimum effort, due to vacuum exhaust and perfect balance
- Motor and grinding head separated by drive shaft improves weight distribution and longer motor life
- Consists of high-tech materials
- Compatible with Vacuum Cleaner ROKAMAT TAPIR M



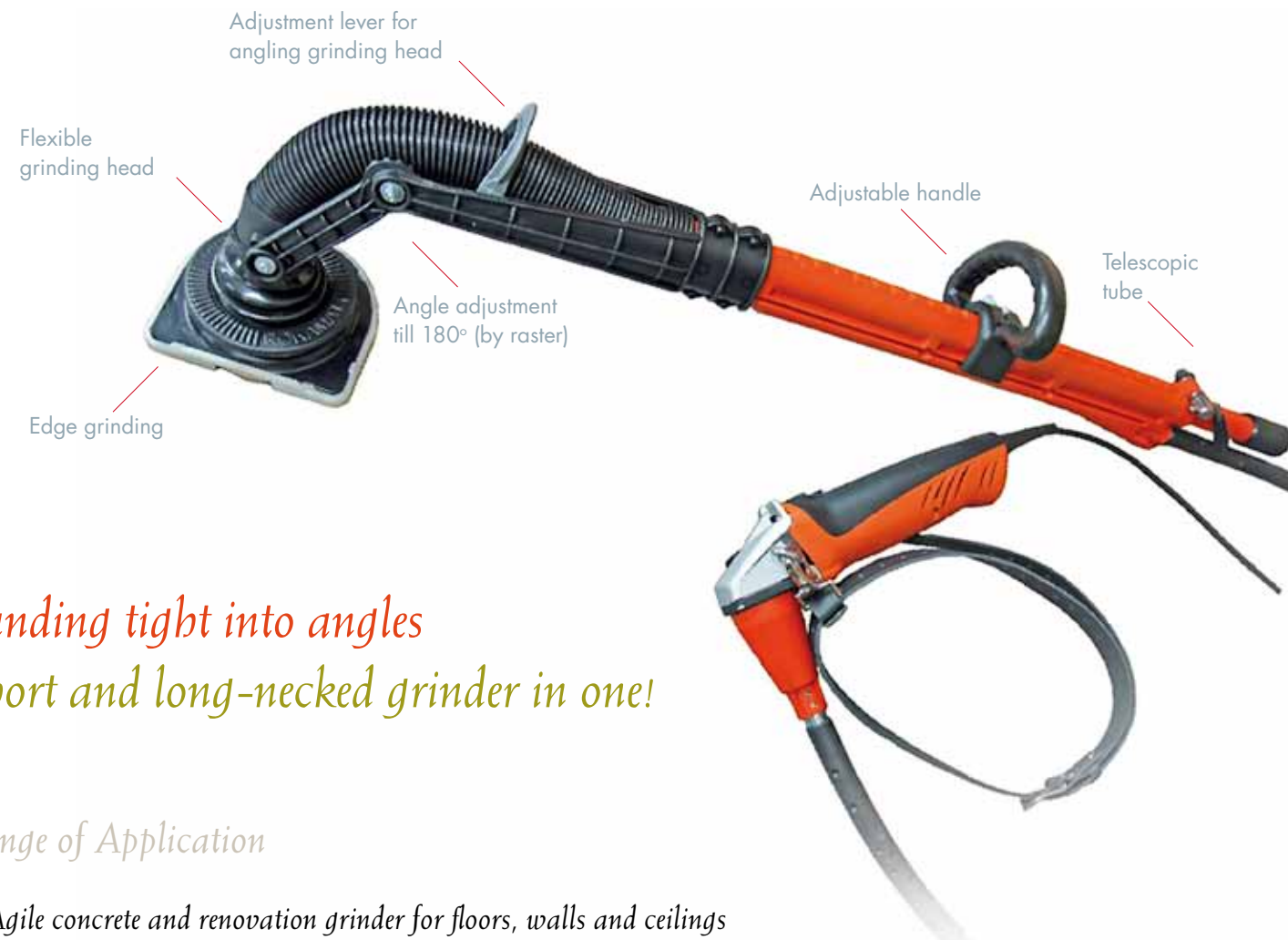
*Sanding tight into angles with adjustable grinding head*

Technical Data	
• Tool r.p.m.:	7000 - 10.000
• Motor input	Type 1: 230 V / 1350 W Type 2: 120 V / 1350 W
• Weight	motor: 2,2 kg, tool: 3,1 kg
• Machine length	retracted: 110 cm extended: 160 cm

MADE IN GERMANY

## ROKAMAT GEX

*Elite Renovation Grinder with super-flexible grinding head*



*Sanding tight into angles  
Short and long-necked grinder in one!*

## Range of Application

- Agile concrete and renovation grinder for floors, walls and ceilings
- Perfect for grinding above head (Head adjustable)



Delivery in robust case, incl. diamond grinding cup „gold“ No. 856

## Accessories for

### Telescope POWER Grinder

Supporting plate with velco  
Ø 230 mm  
with foam rubber base

No. 610



#### Cleaning and Polishing

Cleaning-Pad, coarse No. 622  
Cleaning-Pad, medium No. 620  
Cleaning-Pad, fine No. 621  
Polishing-Pad, very fine No. 628  
Lambskin-Pad, superfine No. 629



Cleaning fair-faced concrete f.e. or polishing parquet

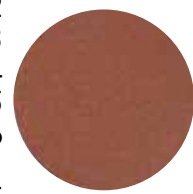
#### Grinding

Sanding discs for professional painting and varnishing

Emery particle 40 pack of 6 No. 611  
Emery particle 60 pack of 6 No. 612  
Emery particle 80 pack of 6 No. 613  
Emery particle 100 pack of 6 No. 614  
Emery particle 120 pack of 6 No. 615  
Emery particle 150 pack of 6 No. 616



Metal abrasive disc, fine No. 605  
Metal abrasive disc, medium No. 606  
Metal abrasive disc, coarse No. 607



For aggressive grinding: timber, plaster, brick, terrazzo, filler, limestone, tiles, clinker blocks, marble, paint, screed, linoleum, carpet remains, epoxy resin, fibreglass, acrylic agents, rubber, gas concrete and many other materials.



#### Abranet grinding system (for plaster, filler, etc.)

Abranet grid 80 pack of 6 No. 623  
Abranet grid 100 pack of 6 No. 624  
Abranet grid 120 pack of 6 No. 625  
Abranet grid 180 pack of 6 No. 626  
Abranet grid 240 pack of 6 No. 627



#### Grinding Concrete burrs

Diamond grinding disc „light“ No. 603  
For grinding concrete burrs, floor screeds, etc.



### GEX-Renovation Grinder

Dry grinding diamond cups Ø 150 mm

#### Diamond grinding cup - gold No. 856

For concrete, granite, screeds, natural stone, asphalt and others

High performance very good surface machining



#### Diamond grinding cup - blue No. 855

For stone, concrete, natural stone as well as for glue residues on concrete or screed and others

High performance very good surface machining



#### Diamond grinding cup - yellow No. 857

For abrasive materials, fresh concrete, screeds, aerated concrete, artificial and natural slabs, lime sand brick, removing glazing from tiles and others

High performance very good surface machining



#### Diamond grinding disc „light“ No. 854

For light grinding jobs (i.e. concrete burrs, floor screeds etc.) and for finishing grinding of concrete



#### Hard metal rasping disc No. 853

For removing epoxy resin, latex paint and old render



### GECKO-Drywall Sander

Supporting plate with velco  
Ø 230 mm  
with foam rubber base

No. 610



#### Cleaning and Polishing

Cleaning-Pad, coarse \*(6) No. 622  
Cleaning-Pad, medium (6) No. 620  
Cleaning-Pad, fine (6) No. 621  
Polishing-Pad, very fine (6) No. 628  
Lambskin-Pad, superfine (6) No. 629



Cleaning fair-faced concrete f.e. or polishing parquet

\*(6) = pack of 6

#### Grinding

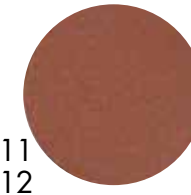
Sanding discs for professional painting and varnishing

Emery particle 40 pack of 6 No. 611  
Emery particle 60 pack of 6 No. 612  
Emery particle 80 pack of 6 No. 613  
Emery particle 100 pack of 6 No. 614  
Emery particle 120 pack of 6 No. 615  
Emery particle 150 pack of 6 No. 616



#### Abranet grinding system (for plaster, filler, etc.)

Abranet grid 80 pack of 6 No. 623  
Abranet grid 100 pack of 6 No. 624  
Abranet grid 120 pack of 6 No. 625  
Abranet grid 180 pack of 6 No. 626  
Abranet grid 240 pack of 6 No. 627



## Payback

ROKAMAT machines bring fast economic return due to low initial acquisition costs, with the benefit of increased production output, resulting in lower wage costs and faster finished areas.

Employees using the light weight, ergonomically designed machines are generally better motivated and produce significantly higher output.

Purchase costs of the machines and accessories are usually recouped after 2 weeks of operation.

Further costs with insulation work are reduced due to less need for adhesive in covering uneven background surfaces, as the ROKAMAT will grind uneven boards flat.



# ROKAMAT Rucksack Vacuum Cleaner

No. 100

it's easy working...

MADE IN GERMANY

## Advantages

- Light weight
- Large filter bags, capacity 15 l
- Short hose length to maximise high suction power
- Long continuous operation
- No need to be dragging heavy separate vacuum systems around
- Freedom of movement
- No sensitive electronic components
- Fast, low cost operation



Technical Data		
• Volt	Type1	230/ 50/60 Hz
	Type2	120/ 50/60 Hz
• Watt		1100
• Vacuum		190 mbar
• Max. air flow		max.: 60 l / sec.
• Bag volume		15 l
• Weight		6,5 kg
• Dimensions/ mm		b. 630, w 430, d. 200

The rucksack vacuum cleaner is ideal for dust extraction in combination with all our grinding machines: ensuring clean working conditions, leaving the users hand free.

## ROKAMAT Rucksack Vacuum Cleaner



Solid, high quality workmanship

Additional socket on device



Working on scaffolding

Sanding plaster, thermal insulation, concrete, exterior rendering and polystyrene

# ROKAMAT TAPIR M 25

No. 125

MADE IN GERMANY

*it's easy working...*

## TAPIR M 25

*Special Vacuum Cleaner  
for harmful dust (dust class M)*



- Innovative filter concept
- Appliance socket with automatic ON/OFF switch
- Electromagnetic pulse filter cleaning
- Volume flow display
- Signal tone for when the volume flow is undercut
- Signal tone for filter cleaning and filter change
- Fastener for intake socket
- Rotary switch on the container
- Air diffuser on the motor fan
- Gentle start control
- Electronic after-running feature
- Water detection with sensor switch-off
- Antistatic preparation

### Technical Data

• Nominal capacity max.:	1400 Watt
• Max. air flow:	42 l/s
• Max. vacuum:	220 mbar
• Container:	
- Gross	25 l
- Dust	20 l
- Water	15 l
• Dimensions: (LxWxH):	40 x 40 x 56 cm
• Weight:	12,7 kg

# ROKAMAT TAPIR M 50

No. 150

MADE IN GERMANY

*it's easy working...*

## TAPIR M 50

*Special Vacuum Cleaner  
for harmful dust (dust class M)*



- Innovative filter concept
- Appliance socket with automatic ON/OFF switch
- Electromagnetic pulse filter cleaning
- Volume flow display
- Signal tone for when the volume flow is undercut
- Signal tone for filter cleaning and filter change
- Fastener for intake socket
- Rotary switch on the container
- Air diffuser on the motor fan
- Gentle start control
- Electronic after-running feature
- Water detection with sensor switch-off
- Antistatic preparation

### Technical Data

• Nominal capacity max.:	1400 Watt
• Max. air flow:	42 l/s
• Max. vacuum:	220 mbar
• Container:	
- Gross	50 l
- Dust	45 l
- Water	40 l
• Dimensions: (LxWxH):	58 x 47 x 64 cm
• Weight:	17,7 kg



## Accessories for ROKAMAT Rucksack Vacuum Cleaner

## Accessories for Tapir M25 and Tapir M50

### Paper filter bags

Paper filter bags, 15 l capacity No. 152  
( Pack of 10)



### Accessory set

Accessory No. 155

- Turbo nozzle
- Suction nozzle
- Floor upholstery nozzle
- Upholstery nozzle
- Joint nozzle
- Suction brush
- Radiator brush
- Suction hose
- 2 tubes
- Adapter



### Fabric filter bag

Fabric filter bag, capacity 15 l No. 153



Only for polystyrene dust  
with zip fastener - to be  
emptied (reusable).



### Plastic sac

for harmful dust No. 130

### Lamellar filter

Lamellar filter No. 154

Additional filter as motor protection



*Application GECKO Drywall Sander / GEX Renovation Grinder*

*Application Plaster Finishing Machines WET und NAUTILO*

*GECKO Drywall Sander*

*GEX Renovation Grinder*



*Easy working at walls and ceilings in any height thanks to continuously adjustable telescopic arm and swivelling grinding head.*

*Plaster Finishing Machine WET*

*Plaster Finishing Machine NAUTILO*



*Easy working thanks to light weight arms through drive unit being attached to the belt at all of our machines.  
The rotary head allows easy access to surfaces and angles, with the long handle you can reach higher areas without climbing a ladder.*



# Plaster Finishing Machine DRY

No. 300

*it's easy working...*

MADE IN GERMANY

## ROKAMAT Plaster Finishing Machine DRY



### Range of Application

- Machining projection plaster and traditional thin coat gypsum finishing plasters, lime and cement based renders.



Delivery in robust machine case,  
incl. sponge disc (No.330)

### Advantages

- Light weight
- Even distribution of work area through large headed work surface
- Work piece / drive separation - improves weight distribution and reduces soiling
- Continuous speed control for optimal working
- Brake proof
- High speed through work (saving approximately 50% of time)



### Technical Data

• Tool r.p.m.:		120 – 350
• Motor output	Type1:	230 V / 900 W / 4,3A
	Type2:	120 V / 900 W / 7,5A
• Weight		motor: 2,5 kg, tool: 2,5 kg



## Plaster Finishing Machine WET (with water injection)

No. 400

*it's easy working...*

MADE IN GERMANY

# ROKAMAT Plaster Finishing Machine WET (with water injection)

### Advantages

- Light weight
- Even distribution of work area through large headed work surface
- Cuts out a whole operation
- Work piece / drive separation - improves weight distribution and reduces soiling
- Continuous speed control for optimal working
- Break proof
- High speed through work (saving approximately 50% of time)



Technical Data	
• Tool r.p.m.:	120-350
• Motor output Type1:	230 V / 900 W / 4,3A
Type2:	120 V / 900 W / 7,5A
• Weight	motor: 2,5 kg, tool: 2,8 kg



### Range of Application

- Machining projection plaster and traditional thin coat gypsum finishing plasters, lime and cement based renders.



Delivery in robust machine case, incl. sponge disc (No.493)



# Plaster Finishing Machine NAUTILO

No. 700

it's easy working...

MADE IN GERMANY

## ROKAMAT Plaster Finishing Machine NAUTILO

### Advantages

- Saving of time compared to manual work (approximately 70%)
- Integrated water tank (6l)
- Backpack (optional mobile on floor)
- Plane working result
- Adjustable water injection
- Leight weight tool holder



Optional Accessory  
„mobile set“:  
Floor vehicle and fle-  
xible drive shaft 4m  
Art.No. 79900

### Technical Data

• Tool r.p.m.	120 – 600
• Motor output	230 V / 950 W / 4,3A
• Weight tool holder	approx. 2,4 kg
• Water tank	6 l



### Range of Application

- Machining plaster and lime-cement plaster
- For perfect plaster surfaces!
- Easy working on scaffolding



Delivery in robust machine case,  
incl. sponge disc (No.493)



Accessories for *Plaster Finishing Machine DRY*  
compatible with „WET“ and „NAUTILO“

*Plaster Finishing Machine WET and NAUTILO*  
compatible with „DRY“

## ADHESIVE SYSTEM

for Ø 250mm und Ø 350mm

### Sponge Discs

*Sponge disc for traditional finish plaster such as multi finish.*

#### Sponge Discs Ø 250mm

Sponge disc, coarse	No. 330
Replacement sponge, coarse	No. 331
Sponge disc, fine	No. 334
Replacement sponge, fine	No. 335



#### Sponge Discs Ø 350mm

Sponge disc, coarse	No. 345
Replacement sponge, coarse	No. 346
Sponge disc, fine	No. 347
Replacement sponge, fine	No. 348

### Foam Rubber Disc

*For generating a fine surface structure.*

Foam rubber disc, superfine Ø 250mm	No. 414
Replacement foam rubber, superfine Ø 250mm	No. 415
Foam rubber disc, superfine Ø 350mm	No. 349
Replacement foam rubber, superfine Ø 350mm	No. 413



### Felt Disc

*Rubbing internal and external lime-cement render surfaces.*

Felt disc	Ø 250mm	No. 332
Replacement felt	Ø 250mm	No. 333



### Cellular Rubber Disc

*Levelling render surfaces with cellular rubber covering*

Cellular rubber disc	Ø 250mm	No. 336
Replacement cellular rubber	Ø 250mm	No. 337



## VELCRO SYSTEM

for Ø 350mm

### Supporting Plate with velcro No. 480

**(For accessory discs d.350mm No. 481-496)**



### Rubbing Plates *For smoothing mortar*

Rubbing plate, perforated	No. 481
Rubbing plate, smooth	No. 482



### Sponge Discs

*Sponge disc for traditional finish plaster such as multi finish.*

#### Sponge Discs

Sponge with velcro, coarse	No. 493
Sponge with velcro, fine	No. 494



### Foam Rubber Disc

*For generating a fine surface structure.*

Foam rubber with velcro, superfine No. 495



### Felt Disc

*Rubbing internal and external lime-cement render surfaces*

Felt Disc with velcro No. 496







# ROKAMAT

*Kammerer GmbH*



Administrative Office and factory 1  
An der B 10  
D-75169 Remchingen

Tel. + (0)7232 9064  
Fax + (0)7232 4475  
rokamat@kammerergmbh.de  
<http://www.rokamat.com>

Management  
Rolf Kammerer  
Beate Kammerer

Amtsgericht Mannheim HRB 504251  
Tax No.: 41410/30241  
Sales Tax ID No. DE812310480